

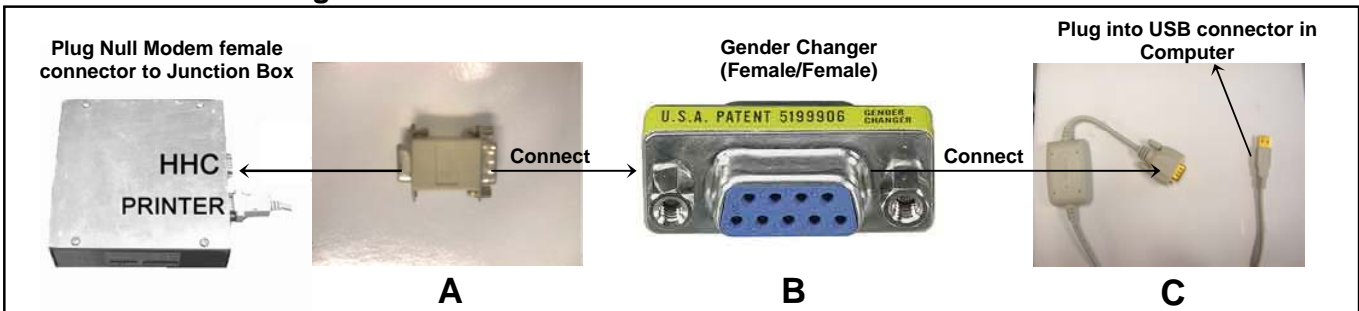
**Instructions to connect a Computer with a USB port to an E4000 junction box serial port  
“Only applicable to computers with no 9-pin serial port”**

**Hardware Requirements**

To connect your computer’s USB Port to the E4000 Junction Box Serial Port (the port not occupied by the printer) use a Radio Shack USB serial adapter cable and the cable accessories specified below:

- (A) Null Modem Radio Shack part # 26-264B
- (B) Gender Changer (DB9 female/DB9 female) Radio Shack part # 26-230
- (C) USB to Male DB9 Cable Radio Shack part # 26-183

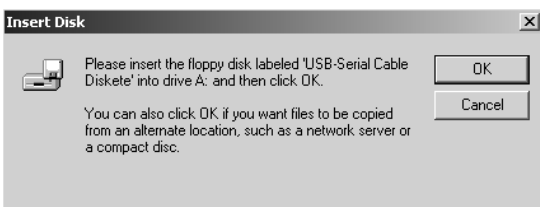
**Connection Path Diagrams**



**USB to Serial Cable**

- First, Plug the USB cable into the computer
- Depending on which operating system you have, Windows will detect a USB device and the corresponding Wizard will be initiated (see the guide supplied with the cable for details).
- A message will pop up. This message will look like the following :

This message means that the computer detected a device in the USB Port. Wait for the next message.



**Do the following :**

- 1) Insert the Floppy Disk supplied with the cable and click OK
- 2) Wait until the message disappears
- 3) The software will automatically install the device driver for the USB cable.

When the message disappears it is recommended to verify that the USB connection was recognized. To do this follow the steps below :

- 1) Go to the icon that says **MY COMPUTER** in the Desktop and **RIGHT CLICK** it.
- 2) Select **PROPERTIES**
- 3) Select the **HARDWARE** tab
- 4) Select **DEVICE MANAGER** in the Device Manager Section
- 5) Click **PORTS (COM & LPT)** and check what Com Port was assigned to the USB connection.

**This Scheme will be shown:**



**Note:** In this example the diagram shows USB in COM3 Port. Computers without Communication Ports (E.g. some Laptops) will show COM1 or COM2.

→ **Shows successful USB Port installation**

On Some computers the installation software may be forced to install the USB cable on a Com Port other than Com1 to Com4. To avoid the system running extremely slowly, the automatically selected Com Port must be transferred to one of Com1 through Com4. To do this follow the steps outlined

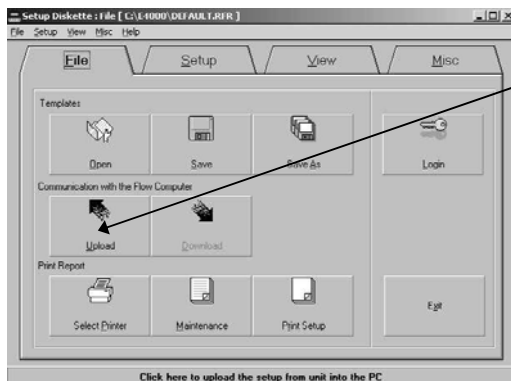
- 1) Double click in the Radio Shack USB to Serial Cable Port.
- 2) Click on the Port Settings Tab
- 3) Click on the Advance Box
- 4) At the bottom of the page will show a scroll box with different Com Port options
- 5) Select a Com Port from 1 to 4.

below.

- From the above scheme do the following:



**E4000 Configuration Software:** To installing the E4000 configuration software on your computer, refer to the “Quick Start Guide for the Neptune E4000 Configuration Software”. Once the E4000 Configuration Software is installed, make sure that it is running through the same port selected for the USB cable. Start the E4000 program. Select the “Default Configuration” by pressing OK.

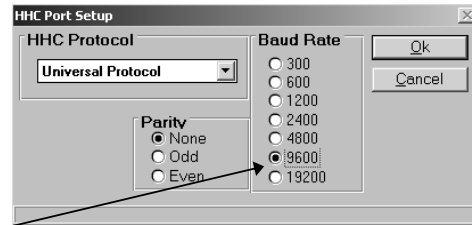


Click **UPLOAD** button under the **FILE** tab. Then, click PC Comm and the following diagram will appear.



**When this occurs, do the following:**

- 1) If the USB cable connection was made to Com Port 3, then it is important to select Com Port 3 (as indicated in the diagram).
- 2) Select a 9600-baud rate (Default).
- 3) Select none parity (Default).



Also, make sure that the **HHC Port Setup** under the **Setup** Tab is in **9600-Baud Rate** (Default).

Click **OK**, and the system will be ready to Upload from the E4000.

**Note:** If the Upload takes longer than 60 seconds there is a problem with the Com Port selected for the USB Device. Change the Com Port as previously described.

\*\*\* For Instructions on how to use the E4000 Configuration Software please refer to the Quick Start Guide for the Neptune E4000 Configuration Software\*\*\*